

DUDLEY ACADEMIES TRUST

Child Protection and Safeguarding

Issue number:	001
Responsible:	Compliance & Safeguarding Officer
Approved by:	Board of Trustees
Date:	May 2019
Review date:	May 2020

Contents

Aims.....	5
Legislation and statutory guidance.....	5
Definitions	5
Equality statement	6
Roles and responsibilities.....	7
All staff.....	7
The designated safeguarding lead (DSL)	7
The Board of Trustees.....	8
The Principal.....	8
Confidentiality	8
Recognising abuse and taking action.....	9
If a child is suffering or likely to suffer from harm, or in immediate danger	9
If a child makes a disclosure to you	9
If you discover that FGM has taken place or a learner is at risk of FGM	10
If you have concerns about a child (as opposed to believing a child is suffering or likely to suffer from harm, or in immediate danger).....	10
Early help.....	11
Referral.....	11
If you have concerns about extremism	12
Concerns about a staff member or volunteer.....	15
Allegations of abuse made against other learners	15
Sexting	16
Notifying parents/carers.....	20
Learners with special educational needs and disabilities.....	20
Mobile phones and cameras.....	20
Complaints and concerns about school safeguarding policies.....	20
Complaints against staff	20
Other complaints	21
Whistle-blowing.....	21
Record-keeping	21
Training	21
All staff.....	21
The DSL and Deputy.....	22
Governors (Local Advisory Committee members)	22

Recruitment – interview panels	22
Staff who have contact with learners and families	22
Monitoring arrangements.....	23
Links with other policies	23
Appendix 1: types of abuse.....	23
Appendix 2: safer recruitment and DBS checks – policy and procedures	24
New staff.....	24
Existing staff.....	25
Agency and third-party staff.....	26
Contractors.....	26
Trainee/student teachers.....	26
Volunteers	26
Trustees.....	26
Staff working in alternative provision settings	27
Adults who supervise learners on work experience	27
Learners staying with host families	27
Appendix 3: allegations of abuse made against staff.....	27
Suspension	28
Definitions for outcomes of allegation investigations	28
Procedure for dealing with allegations	28
Timescales.....	30
Specific actions	30
Action following a criminal investigation or prosecution.....	30
Conclusion of a case where the allegation is substantiated	30
Individuals returning to work after suspension.....	30
Unsubstantiated or malicious allegations.....	30
Confidentiality.....	30
Record-keeping.....	31
References	31
Learning lessons.....	31
Children missing from education.....	32
Child sexual exploitation	32
Homelessness.....	33
So-called ‘honour-based’ violence (including FGM and forced marriage)	33
FGM.....	34

Forced marriage	35
Preventing radicalisation	35
Self-Harm and Mental Health	37
Harmful Sexual Behaviour	37
Criminal Exploitation and County Lines	37
Private Fostering.....	37
Young Carer.....	38
Teenage Pregnancy	38
Checking the identity and suitability of visitors.....	38
Missing learners	39
Appendix 4: Role of the designated safeguarding lead	40
Deputy designated safeguarding leads	40

Aims

The academy aims to ensure that:

- Appropriate action is taken in a timely manner to safeguard and promote children's welfare
- All staff are aware of their statutory responsibilities with respect to safeguarding
- Staff are properly trained in recognising and reporting safeguarding issues
- A safe environment is created where children can succeed and are equipped with the skills needed to keep themselves safe
- Children that have been abused are supported through multi-agency and internal intervention

Legislation and statutory guidance

This policy is based on the Department for Education's statutory guidance [Keeping Children Safe in Education \(2018\)](#) and [Working Together to Safeguard Children \(2018\)](#), and the [Governance Handbook](#). We comply with this guidance and the arrangements agreed and published by our 3 local safeguarding partners.

This policy is also based on the following legislation:

- Part 3 of the schedule to the [Education \(Independent School Standards\) Regulations 2014](#), which places a duty on academies and independent schools to safeguard and promote the welfare of learners at the school
- [The Children Act 1989](#) (and [2004 amendment](#)), which provides a framework for the care and protection of children
- Section 5B(1) of the Female Genital Mutilation Act 2003, as inserted by section 74 of the [Serious Crime Act 2015](#), which places a statutory duty on teachers to report to the police where they discover that female genital mutilation (FGM) appears to have been carried out on a girl under 18
- [Statutory guidance on FGM](#), which sets out responsibilities with regards to safeguarding and supporting girls affected by FGM
- [The Rehabilitation of Offenders Act 1974](#), which outlines when people with criminal convictions can work with children
- Schedule 4 of the [Safeguarding Vulnerable Groups Act 2006](#), which defines what 'regulated activity' is in relation to children
- [Statutory guidance on the Prevent duty](#), which explains schools' duties under the Counter-Terrorism and Security Act 2015 with respect to protecting people from the risk of radicalisation and extremism.

Definitions

Safeguarding and promoting the welfare of children means:

- Protecting children from maltreatment
- Preventing impairment of children's health or development
- Ensuring that children grow up in circumstances consistent with the provision of safe and effective care

- Taking action to enable all children to have the best outcomes

Child protection is part of this definition and refers to activities undertaken to prevent children suffering, or being likely to suffer, significant harm. Child Protection will include the unborn child until they are 18 and 25 with SEND

Abuse is a form of maltreatment of a child, and may involve inflicting harm or failing to act to prevent harm. Appendix I explains the different types of abuse.

Neglect is a form of abuse and is the persistent failure to meet a child's basic physical and/or psychological needs, likely to result in the serious impairment of the child's health or development. Appendix I defines neglect in more detail.

Sexting (also known as youth produced sexual imagery) is the sharing of sexual imagery (photos or videos) by children

Children includes everyone under the age of 18.

The following **3 safeguarding partners** are identified in [Keeping Children Safe in Education](#) (and defined in the [Children Act 2004](#), as amended by chapter 2 of the [Children and Social Work Act 2017](#)). They will make arrangements to work together to safeguard and promote the welfare of local children, including identifying and responding to their needs:

- The local authority (LA)
- A clinical commissioning group for an area within the LA
- The chief officer of police for a police area in the LA area

Equality statement

Some children have an increased risk of abuse, and additional barriers can exist for some children with respect to recognising or disclosing it. We are committed to anti-discriminatory practice and recognise children's diverse circumstances. We ensure that all children have the same protection, regardless of any barriers they may face.

We give special consideration to children who:

- Have special educational needs (SEN) or disabilities
- Are young carers
- May experience discrimination due to their race, ethnicity, religion, gender identification or sexuality
- Have English as an additional language
- Are known to be living in difficult situations – for example, temporary accommodation or where there are issues such as substance abuse or domestic violence
- Are at risk of FGM, sexual exploitation, forced marriage, or radicalisation
- Are asylum seekers
- Are at risk due to either their own or a family member's mental health needs
- Are looked after or previously looked after

Roles and responsibilities

Safeguarding and child protection is **everyone's** responsibility. This policy applies to all staff, volunteers and trustees in the school and is consistent with the procedures of the 3 safeguarding partners. Our policy and procedures also apply to extended school and off-site activities.

All staff

All staff will read and understand part 1 and Annex A of the Department for Education's statutory safeguarding guidance, [Keeping Children Safe in Education](#), and review this guidance at least annually.

All staff will be aware of:

- Our systems which support safeguarding, including this child protection and safeguarding policy, the staff code of conduct, the role and identity of the designated safeguarding lead (DSL), the behaviour policy, and the safeguarding response to children who go missing from education
- The early help process (sometimes known as the common assessment framework) and their role in it, including identifying emerging problems, liaising with the DSL, and sharing information with other professionals to support early identification and assessment
- The process for making referrals to local authority children's social care and for statutory assessments that may follow a referral, including the role they might be expected to play
- What to do if they identify a safeguarding issue or a child tells them they are being abused or neglected, including specific issues such as FGM, and how to maintain an appropriate level of confidentiality while liaising with relevant professionals
- The signs of different types of abuse and neglect, as well as specific safeguarding issues, such as child sexual exploitation (CSE), FGM and radicalisation

The Training section and appendix 4 of this policy outline in more detail how staff are supported to do this.

The designated safeguarding lead (DSL)

The DSL is a member of the senior leadership team. Our DSL is **Sonya Griffiths (Assistant Principal – Inclusion and Learner Wellbeing)**. The DSL takes lead responsibility for child protection and wider safeguarding.

During term time, the DSL will be available during school hours for staff to discuss any safeguarding concerns.

When the DSL is absent, the deputy **Rachel Anslow (SENCo)**, – will act as cover.

If the DSL and Deputy are not available, **Intervention Coordinators Emily Rawlings (year 7), Jacqui Burrell (year 9), Michelle Macefield (year 8) or Craig Beckett (year 10 & 11)** will act as cover (for example, during out-of-hours/out-of-term activities).

The DSL will be given the time, funding, training, resources and support to:

- Provide advice and support to other staff on child welfare and child protection matters
- Take part in strategy discussions and inter-agency meetings and/or support other staff to do so
- Contribute to the assessment of children
- Refer suspected cases, as appropriate, to the relevant body (local authority children’s social care, Channel programme, Disclosure and Barring Service, and/or police), and support staff who make such referrals directly

The DSL will also keep the Principal informed of any issues, and liaise with local authority case managers and designated officers for child protection concerns as appropriate.

The full responsibilities of the DSL and Deputy are set out in their job description.

The Board of Trustees

The board of trustees will approve this policy at each review, ensure it complies with the law and hold the Principal to account for its implementation.

The board of trustees will appoint a senior board level (or equivalent) to monitor the effectiveness of this policy in conjunction with the full board of trustees. This is always a different person from the DSL.

The Chair of Trustees will act as the ‘case manager’ in the event that an allegation of abuse is made against the Principal, where appropriate (see appendix 3).

All Trustees will read Keeping Children Safe in Education.

The Training section has information on how Trustees are supported to fulfil their role.

The Principal

The Principal is responsible for the implementation of this policy, including:

- Ensuring that staff (including temporary staff) and volunteers are informed of our systems which support safeguarding, including this policy, as part of their induction
- Communicating this policy to parents/carers when their child joins the school and via the school website
- Ensuring that the DSL has appropriate time, funding, training and resources, and that there is always adequate cover if the DSL is absent
- Ensuring that all staff undertake appropriate safeguarding and child protection training and update this regularly
- Acting as the ‘case manager’ in the event of an allegation of abuse made against another member of staff or volunteer, where appropriate (see appendix 3) liaise with LADO

Confidentiality

We recognise that all matters relating to child protection are confidential and note that:

- Timely information sharing is essential to effective safeguarding
- Fears about sharing information must not be allowed to stand in the way of the need to promote the welfare, and protect the safety, of children

- [The Data Protection Act \(DPA\) 2018](#) and [GDPR](#) do not prevent, or limit, the sharing of information for the purposes of keeping children safe
- If staff need to share ‘special category personal data’, the [DPA 2018](#) contains ‘safeguarding of children and individuals at risk’ as a processing condition that allows practitioners to share information without consent if it is not possible to gain consent, it cannot be reasonably expected that a practitioner gains consent, or if to gain consent would place a child at risk
- Staff should never promise a child that they will not tell anyone about a report of abuse, as this may not be in the child’s best interests
- The government’s [information sharing advice for safeguarding practitioners](#) includes 7 ‘golden rules’ for sharing information, and will support staff who have to make decisions about sharing information
- If staff are in any doubt about sharing information, they should speak to the designated safeguarding lead (or deputy)
- Confidentiality is also addressed in this policy with respect to record-keeping, and allegations of abuse against staff in appendix 3

Recognising abuse and taking action

Staff, volunteers and trustees must follow the procedures set out below in the event of a safeguarding issue.

Please note – in this and subsequent sections, you should take any references to the DSL to mean “the DSL (or deputy DSL)”.

If a child is suffering or likely to suffer from harm, or in immediate danger

Make a referral to children’s social care and/or the police immediately if you believe a child is suffering or likely to suffer from harm, or in immediate danger. Anyone can make a referral.

Tell the DSL as soon as possible if you make a referral directly.

You can also report child abuse to your local authority by following the link to the GOV.UK webpage for reporting child abuse to your local council:

<https://www.gov.uk/report-child-abuse-to-local-council>

If a child makes a disclosure to you

If a child discloses a safeguarding issue to you, you should:

- Listen to and believe them. Allow them time to talk freely and do not ask leading questions
- Stay calm and do not show that you are shocked or upset
- Tell the child they have done the right thing in telling you. Do not tell them they should have told you sooner
- Explain what will happen next and that you will have to pass this information on. Do not promise to keep it a secret

- Write up your conversation as soon as possible in the child’s own words. Stick to the facts, and do not put your own judgement on it
- Sign and date the write-up and pass it on to the DSL. Alternatively, if appropriate, make a referral to children’s social care and/or the police directly and tell the DSL as soon as possible that you have done so

If you discover that FGM has taken place or a learner is at risk of FGM

[The Department for Education’s Keeping Children Safe in Education](#) explains that FGM comprises “all procedures involving partial or total removal of the external female genitalia, or other injury to the female genital organs”.

FGM is illegal in the UK and a form of child abuse with long-lasting, harmful consequences. It is also known as ‘female genital cutting’, ‘circumcision’ or ‘initiation’.

Possible indicators that a learner has already been subjected to FGM, and factors that suggest a learner may be at risk, are set out in appendix 4.

Any teacher who discovers (either through disclosure by the victim or visual evidence) that an act of FGM appears to have been carried out on a learner under 18 must immediately report this to the police, personally. This is a statutory duty, and teachers will face disciplinary sanctions for failing to meet it.

Unless they have good reason not to, they should also discuss the case with the DSL and involve children’s social care as appropriate.

Any other member of staff who discovers that an act of FGM appears to have been carried out on a learner under 18 must speak to the DSL and follow our local safeguarding procedures.

The duty for teachers mentioned above does not apply in cases where a learner is *at risk* of FGM or FGM is suspected but is not known to have been carried out. Staff should not examine learners.

Any member of staff who suspects a learner is at risk of FGM or suspects that FGM has been carried out must speak to the DSL and follow our local safeguarding procedures.

If you have concerns about a child (as opposed to believing a child is suffering or likely to suffer from harm, or in immediate danger)

Where possible, speak to the DSL first to agree a course of action.

If in exceptional circumstances the DSL is not available, this should not delay appropriate action being taken. Speak to a member of the senior leadership team and/or take advice from local authority children’s social care. You can also seek advice at any time from the NSPCC helpline on 0808 800 5000.

Make a referral to local authority children’s social care directly, if appropriate (see ‘Referral’ below). Share any action taken with the DSL as soon as possible.

Early help

If early help is appropriate, the DSL will generally lead on liaising with other agencies and setting up an inter-agency assessment as appropriate. Staff may be required to support other agencies and professionals in an early help assessment, in some cases acting as the lead practitioner.

The DSL will keep the case under constant review and the school will consider a referral to local authority children's social care if the situation does not seem to be improving. Timelines of interventions will be monitored and reviewed.

The Early Help Assessment forms are a key part of the Early Help Strategy and is a simple way to help identify the needs of children, young people and their families and make a plan to meet those needs. It is designed to be a shared tool which can be used by all agencies in Dudley who are delivering early help. It is a standardised approach so that all children and families have the same experience of identifying their needs, strengths and challenges. It also means that all agencies and partners are operating the same system which ensures consistency right across the partnership. Parents/carers will give both verbal and written consent. The completed forms will be forwarded to the DSL to complete an Early Help Assessment with the family. This will be returned to the Family Centre where the parent/carer resides.

The approach of early identification puts children and young people at the heart of the assessment and will prevent issues escalating to statutory services.

It is vital that all Staff are aware of the Early Help Procedure and the support that is available for our families ([KCSIE 2018](#)). In order to do this most effectively, all staff receive training and regular updates on the Early Help process.

The DSL or Deputy DSL will attend the Multi Agency Allocation Meetings (MAAM) at the Family Centre to assess the case against threshold. Staff from the academy will attend all Early Help meetings and contribute to the Support Plan, reviewing and taking the role of Lead Professional when required. The DSL will attend bi-annual strategic reviews with the Local Authority regarding the Early Help provision.

The DSL will follow the guidelines set out in the [Dudley Early Help Strategy 2018 – 2021](#).

Referral

If it is appropriate to refer the case to local authority children's social care or the police, the DSL will make the referral or support you to do so.

If you make a referral directly, you must tell the DSL as soon as possible.

Section 47 referrals

A child in need of protection is described in [section 47 of the Children Act 1989](#), Paragraph (1) and [Children Act 2004](#).

Where a local authority has reasonable cause to suspect that a child is suffering or is likely to suffer significant harm, where the child lives or is found in the authority's area, they shall make or cause to be made, such enquiries as they consider necessary to enable them to decide whether they should take any action to safeguard or promote the child's welfare.

If a child is thought to be or has disclosed risk of significant harm, the DSL will notify the Multi-Agency Safeguarding (MASH) Team by phone immediately and then through the completion of a Multi-Agency Referral Form (MARF). Parents/Carers will be notified if safe to do so, or unless advised by the MASH Team not to do so. Where necessary, the MARF may also be accompanied by a referral to the Police.

Section 17 referrals

The definition of 'children in need' is defined by the [Children Act 1989 s17](#)

If a child is (a) unlikely to achieve or maintain, or to have the opportunity of achieving or maintaining, a reasonable standard of health or development without the provision of services by a local authority or (b) their health or development is likely to be significantly impaired, or further impaired, without the provision for him of such services; or (c) he is disabled

If a child is in Need of higher level support than an Early Help Plan but is not at risk of significant harm, then a MARF will be completed with parental/carer knowledge and agreement to Children's Services.

The local authority will make a decision within 1 working day of a referral about what course of action to take and will let the person who made the referral know the outcome. The DSL or person who made the referral must follow up with the local authority if this information is not made available, and ensure outcomes are properly recorded.

If the child's situation does not seem to be improving after the referral, the DSL or person who made the referral must follow local escalation procedures to ensure their concerns have been addressed and that the child's situation improves.

If you have concerns about extremism

If a child is not suffering or likely to suffer from harm, or in immediate danger, where possible speak to the DSL first to agree a course of action.

If in exceptional circumstances the DSL is not available, this should not delay appropriate action being taken. Speak to a member of the senior leadership team and/or seek advice from local authority children's social care. Make a referral to local authority children's social care directly, if appropriate (see 'Referral' above).

Where there is a concern, the DSL will consider the level of risk and decide which agency to make a referral to. This could include [Channel](#), the government's programme for identifying and supporting individuals at risk of being drawn into terrorism, or the local authority children's social care team.

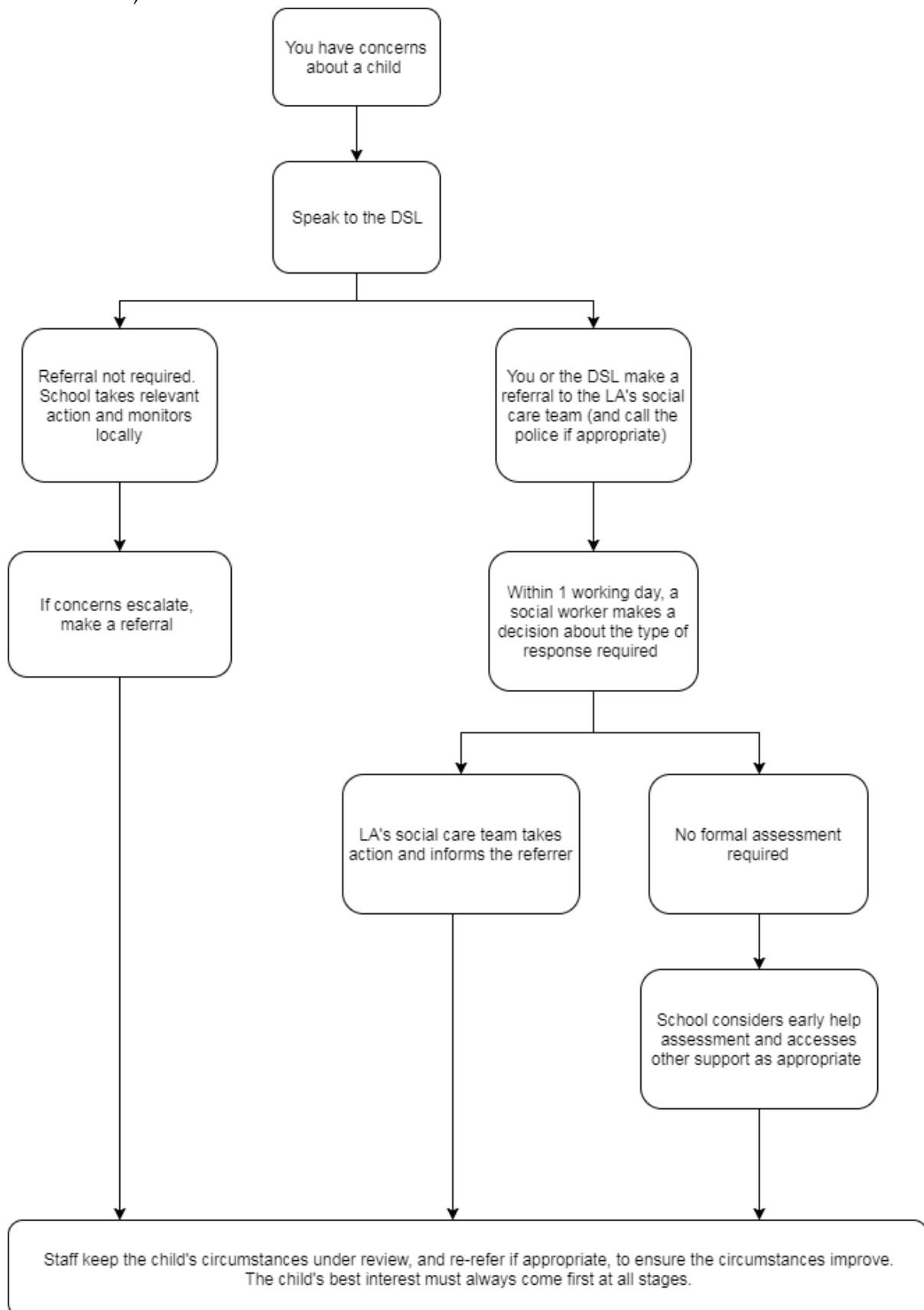
The Department for Education also has a dedicated telephone helpline, 020 7340 7264, which school staff and trustees can call to raise concerns about extremism with respect to a learner. You can also email counter.extremism@education.gov.uk. Note that this is not for use in emergency situations.

In an emergency, call 999 or the confidential anti-terrorist hotline on 0800 789 321 if you:

- Think someone is in immediate danger
- Think someone may be planning to travel to join an extremist group
- See or hear something that may be terrorist-related

Figure 1: procedure if you have concerns about a child's welfare (as opposed to believing a child is suffering or likely to suffer from harm, or in immediate danger)

(Note – if the DSL is unavailable, this should not delay action. See 'The Designated Safeguarding Lead' section for what to do.)



Concerns about a staff member or volunteer

If you have concerns about a member of staff or volunteer, or an allegation is made about a member of staff or volunteer posing a risk of harm to children, speak to the Principal. If the concerns/allegations are about the Principal, speak to the Chair of the Trust Board.

Allegations of abuse made against other learners

We recognise that children are capable of abusing their peers. Abuse will never be tolerated or passed off as “banter”, “just having a laugh” or “part of growing up”.

We also recognise the gendered nature of peer-on-peer abuse (i.e. that it is more likely that girls will be victims and boy’s perpetrators). However, all peer-on-peer abuse is unacceptable and will be taken seriously.

Most cases of learners hurting other learners will be dealt with under our school’s behaviour policy, but this child protection and safeguarding policy will apply to any allegations that raise safeguarding concerns. This might include where the alleged behaviour:

- Is serious, and potentially a criminal offence
- Could put learners in the school at risk
- Is violent
- Involves learners being forced to use drugs or alcohol
- Involves sexual exploitation, sexual abuse or sexual harassment, such as indecent exposure, sexual assault, or sexually inappropriate pictures or videos (including sexting)

If a learner makes an allegation of abuse against another learner:

- You must record the allegation and tell the DSL, but do not investigate it
- The DSL will contact the local authority children’s social care team and follow its advice, as well as the police if the allegation involves a potential criminal offence
- The DSL will put a risk assessment and support plan into place for all children involved (including the victim(s), the child(ren) against whom the allegation has been made and any others affected) with a named person they can talk to if needed
- The DSL will contact the children and adolescent mental health services (CAMHS), if appropriate

We will minimise the risk of peer-on-peer abuse by:

- Challenging any form of derogatory or sexualised language or behaviour, including requesting or sending sexual images
- Being vigilant to issues that particularly affect different genders – for example, sexualised or aggressive touching or grabbing towards female learners, and initiation or hazing type violence with respect to boys
- Ensuring our curriculum helps to educate learners about appropriate behaviour and consent
- Ensuring learners know they can talk to staff confidentially
- Ensuring staff are trained to understand that a learner harming a peer could be a sign that the child is being abused themselves, and that this would fall under the scope of this policy

Sexting

If you are made aware of an incident involving sexting (also known as 'youth produced sexual imagery'), you must report it to the DSL immediately.

You must **not**:

- View, download or share the imagery yourself, or ask a learner to share or download it. If you have already viewed the imagery by accident, you must report this to the DSL
- Delete the imagery or ask the learner to delete it
- Ask the learner(s) who are involved in the incident to disclose information regarding the imagery (this is the DSL's responsibility)
- Share information about the incident with other members of staff, the learner(s) it involves or their, or other, parents and/or carers
- Say or do anything to blame or shame any young people involved

You should explain that you need to report the incident, and reassure the learner(s) that they will receive support and help from the DSL.

Initial review meeting

Following a report of an incident, the DSL will hold an initial review meeting with appropriate school staff. This meeting will consider the initial evidence and aim to determine:

- Whether there is an immediate risk to learner(s)
- If a referral needs to be made to the police and/or children's social care
- If it is necessary to view the imagery in order to safeguard the young person (in most cases, imagery should not be viewed)
- What further information is required to decide on the best response
- Whether the imagery has been shared widely and via what services and/or platforms (this may be unknown)
- Whether immediate action should be taken to delete or remove images from devices or online services
- Any relevant facts about the learners involved which would influence risk assessment
- If there is a need to contact another school, college, setting or individual
- Whether to contact parents or carers of the learners involved (in most cases parents/carers should be involved)

The DSL will make an immediate referral to police and/or children's social care if:

- The incident involves an adult
- There is reason to believe that a young person has been coerced, blackmailed or groomed, or if there are concerns about their capacity to consent (for example owing to special educational needs)
- What the DSL knows about the imagery suggests the content depicts sexual acts which are unusual for the young person's developmental stage, or are violent
- The imagery involves sexual acts and any learner in the imagery is under 13

- The DSL has reason to believe a learner is at immediate risk of harm owing to the sharing of the imagery (for example, the young person is presenting as suicidal or self-harming)

If none of the above apply then the DSL, in consultation with the Principal and other members of staff as appropriate, may decide to respond to the incident without involving the police or children's social care.

Further review by the DSL

If at the initial review stage a decision has been made not to refer to police and/or children's social care, the DSL will conduct a further review.

They will hold interviews with the learners involved (if appropriate) to establish the facts and assess the risks.

If at any point in the process there is a concern that a learner has been harmed or is at risk of harm, a referral will be made to children's social care and/or the police immediately.

Informing parents/carers

The DSL will inform parents/carers at an early stage and keep them involved in the process, unless there is a good reason to believe that involving them would put the learner at risk of harm.

Referring to the police

If it is necessary, the incident will be referred to the Police.

Recording incidents

All sexting incidents and the decisions made in responding to them will be recorded. The record-keeping arrangements set out in the 'Record Keeping' section of this policy and also apply to recording incidents of sexting.

Curriculum coverage

Learners are taught about the issues surrounding sexting as part of our PSHE education and computing programmes. Teaching covers the following in relation to sexting:

- What it is
- How it is most likely to be encountered
- The consequences of requesting, forwarding or providing such images, including when it is and is not abusive
- Issues of legality
- The risk of damage to people's feelings and reputation

Learners also learn the strategies and skills needed to manage:

- Specific requests or pressure to provide (or forward) such images
- The receipt of such images

Child protection and wider child safety issues will be addressed through the curriculum as appropriate. Relevant issues will be addressed through the curriculum, for example self-esteem, emotional literacy, assertiveness, power, sex and relationship education, e-safety and bullying.

This will be done through PSHE, Tutor Time, Extended Activities, drop down Days and Assemblies. Dedicated Safeguarding assemblies will take place on a Termly basis or more frequently if required. Topics will include Gang and Youth Violence, Anti knife crime, racism, making choices, British Values, Anti Bullying workshops, Substance misuse, sexting, Positive mental health and sexual health.

This policy on sexting is also shared with learners so they are aware of the processes the school will follow in the event of an incident.

Additional Support

The Academy is committed to providing the earliest levels of support. Safeguarding issues that do not meet Threshold for outside agency support will be offered a wide range of help in school. Intervention work will be recorded and the data used to track trends and vulnerable groups. Intervention will also take form of preventative and educational workshops, small group work and 1:1 session.

These will include;

Keeping Safe Work

Students needing advice or support in obtaining information or practical support for behaviour that is putting them 'at risk' This includes Harmful Sexual Behaviours that have not met Threshold with Children's Services or are exiting Children's Services support.

This can include low level concerns around sexual health, safety and internet usage. It includes sexting, images, self-esteem and self-worth. Advice on relationships, sexual identity and grooming is also available. Sessions are weekly for as long as required. Referrals may be made to specialist services or other interventions within school if needed

Emotional Well-being

Self – harming behaviour will automatically be referred to the GP for assessment via the safeguarding route. Students experiencing poor Mental Health that do not meet the threshold for CAMHS or other external agencies, can be referred for Emotional Well Being sessions. Low Self-Esteem and Self-Worth, anxiety, or students exiting CAMHS support, can all be referred for this intervention.

The aim is to support and offer practical steps to self-protect. It will monitor and refer on if conditions become more serious. The sessions will improve positive Mental Health, raise awareness for the individual and sign post to other support networks.

Positive Steps

The school nurse will accept referrals for pre-CAMHS work with students experiencing poor mental health that has been ongoing despite the intervention of pastoral staff. It will be used as an assessment of need and can be used to directly refer into CAMHS if needed.

Counselling

Counselling is available in school via referral to the SENCO and will take place weekly in school. Pegasus Academy will also actively promote 'Kooth' online counselling and also the 'What Centre' based in the local Town Centre

Stop Smoking Service

NHS services will be available in school for students wishing to reduce or stop smoking. Free advice and nicotine replacement products will be made available

Alcohol and Substance misuse

Any student wanting advice or support with alcohol or substance use, will get confidential support from Switch. The School Nurse also offers drop in sessions on a weekly basis in school

Anger Management

Individual intervention coordinators / external agencies (eg. Champions Church) will work with individuals or small groups with bespoke programs to address anger management / actions and consequences / shine and strength groups.

Sexual Health

Referrals for practical help and support from conception to birth. Education, benefits and sexual health are all covered and supported. This includes young dads for male students. Contraception advice and support is also available on a 1:1 basis.

Delay Project

Helping young people make more informed choices about personal safety and sexual behaviour with greater awareness of risk reduction.

- remain engaged in education with increased resilience
- involving personalised/specialised mentoring for those most at risk
- Early intervention sexual health and harm prevention programme (basically what Delay is). Delivered to vulnerable young people, raising awareness of the dangers of risky behaviours, developing coping strategies for peer pressure, improving self-awareness, reducing risk of harm and creating opportunities for disclosure.

E-Safety

Following an incident involving unsafe or risky behaviour using a computer in school, notification will be sent through with student details. 1:1 direct work will be carried out to further assess the level of concern.

This may lead to further work being conducted through Keeping Safe, Mentoring depending on the issue

Notifying parents/carers

Where appropriate, we will discuss any concerns about a child with the child's parents/carers. The DSL will normally do this in the event of a suspicion or disclosure.

Other staff will only talk to parents about any such concerns following consultation with the DSL.

If we believe that notifying the parents/carers would increase the risk to the child, we will discuss this with the local authority children's social care team before doing so.

In the case of allegations of abuse made against other children, we will normally notify the parents/carers of all the children involved.

Learners with special educational needs and disabilities

We recognise that learners with special educational needs (SEN) and disabilities can face additional safeguarding challenges. Additional barriers can exist when recognising abuse and neglect in this group, including:

- Assumptions that indicators of possible abuse such as behaviour, mood and injury relate to the child's disability without further exploration
- Learners being more prone to peer group isolation than other learners
- The potential for learners with SEN and disabilities being disproportionately impacted by behaviours such as bullying, without outwardly showing any signs
- Communication barriers and difficulties in overcoming these barriers.

Mobile phones and cameras

Staff are allowed to bring their personal phones to school for their own use, but will limit such use to non-contact time when learners are not present. Staff members' personal phones will remain in their bags or cupboards during contact time with learners.

Staff will not take pictures or recordings of learners on their personal phones or cameras.

Staff will not use personal phones to make contact with children or parents without direct authorisation from the Principal

We will follow the [General Data Protection Regulation](#) and [Data Protection Act 2018](#) when taking and storing photos and recordings for use in the school.

Complaints and concerns about school safeguarding policies

Complaints against staff

Complaints against staff that are likely to require a child protection investigation will be handled in accordance with our procedures for dealing with allegations of abuse made against staff (see appendix 3).

Other complaints

If concerns are raised by parents/carers that relate to a possible safeguarding issue, the matter will be referred to the designated safeguarding lead or the senior leadership team and will be handled in line with the Child Protection and Safeguarding Policy. If the concerns related to the premises, the Principal would work collaboratively with the operations team to investigate the concerns further and take action if required.

Whistle-blowing

The academy has a separate whistle-blowing policy that covers concerns regarding the way the academy safeguards learners – including poor or unsafe practice, or potential failures.

Record-keeping

We will hold records in line with our records retention schedule.

All safeguarding concerns, discussions, decisions made and the reasons for those decisions, must be recorded in writing. If you are in any doubt about whether to record something, discuss it with the DSL.

Non-confidential records will be easily accessible and available. Confidential information and records will be held securely and only available to those who have a right or professional need to see them.

Safeguarding records relating to individual children will be retained for a reasonable period of time after they have left the school.

If a child for whom the school has, or has had, safeguarding concerns moves to another school, the DSL will ensure that their child protection file is forwarded promptly and securely, and separately from the main learner file. In addition, if the concerns are significant or complex, and/or social services are involved, the DSL will speak to the DSL of the receiving school and provide information to enable them to have time to make any necessary preparations to ensure the safety of the child.

We will hold records in line with our records retention schedule and [GDPR](#). The academy will share information with other agencies and when this is appropriate, in line with local safeguarding procedures.

In addition:

- Appendix 2 sets out our policy on record-keeping specifically with respect to recruitment and pre-employment checks
- Appendix 3 sets out our policy on record-keeping with respect to allegations of abuse made against staff

Training

All staff

All staff members will undertake safeguarding and child protection training at induction, including on whistle-blowing procedures, to ensure they understand the school's safeguarding systems and their responsibilities, and can identify signs of possible abuse or

neglect. This training will be regularly updated and will be in line with advice from the 3 safeguarding partners.

All staff will have training on the government's anti-radicalisation strategy, Prevent, to enable them to identify children at risk of being drawn into terrorism and to challenge extremist ideas.

Staff will also receive regular safeguarding and child protection updates (for example, through emails, e-bulletins and staff meetings) as required, but at least annually.

Contractors who are provided through a private finance initiative (PFI) or similar contract will also receive safeguarding training.

Volunteers will receive appropriate training, if applicable.

The DSL and Deputy

The DSL and Deputy will undertake child protection and safeguarding training at least every 2 years.

The DSL should also complete the 'Core Working Together' and 'Threshold' training.

In addition, they will update their knowledge and skills at regular intervals and at least annually (for example, through e-bulletins, meeting other DSLs, or taking time to read and digest safeguarding developments).

They will also undertake Prevent awareness training.

Governors (Local Advisory Committee members)

All governors receive training about safeguarding, to make sure they have the knowledge and information needed to perform their functions and understand their responsibilities.

As the chair of governors may be required to act as the 'case manager' in the event that an allegation of abuse is made against the Principal, they receive training in managing allegations for this purpose.

A member of the Local Advisory Committee will take a lead on Safeguarding. Additional training will be provided as required. The named LAC member will meet with the DSL on a Half Termly basis to check this policy is being carried out in practice.

Recruitment – interview panels

At least one person conducting any interview for a post at the school will have undertaken safer recruitment training. This will cover, as a minimum, the contents of the Department for Education's statutory guidance, [Keeping Children Safe in Education](#), and will be in line with local safeguarding procedures.

Staff who have contact with learners and families

All staff who have contact with children and families will have supervisions which will provide them with support, coaching and training, promote the interests of children and allow for confidential discussions of sensitive issues.

Monitoring arrangements

This policy will be reviewed annually (or before if significant changes are made to statutory frameworks). At every review, it will be approved by the Board of Trustees.

Links with other policies

This policy links to the following policies and procedures:

- Behaviour
- Staff Code of Conduct
- Complaints
- Health and safety
- Attendance
- Online safety
- Equality
- Sex and relationship education
- First aid
- Curriculum
- Privacy notices

These appendices are based on the Department for Education’s statutory guidance, [Keeping Children Safe in Education](#).

Appendix I: types of abuse

Abuse, including neglect, and safeguarding issues are rarely standalone events that can be covered by one definition or label. In most cases, multiple issues will overlap.

Physical abuse may involve hitting, shaking, throwing, poisoning, burning or scalding, drowning, suffocating or otherwise causing physical harm to a child. Physical harm may also be caused when a parent or carer fabricates the symptoms of, or deliberately induces, illness in a child.

Emotional abuse is the persistent emotional maltreatment of a child such as to cause severe and adverse effects on the child’s emotional development. Some level of emotional abuse is involved in all types of maltreatment of a child, although it may occur alone.

Emotional abuse may involve:

- Conveying to a child that they are worthless or unloved, inadequate, or valued only insofar as they meet the needs of another person
- Not giving the child opportunities to express their views, deliberately silencing them or ‘making fun’ of what they say or how they communicate
- Age or developmentally inappropriate expectations being imposed on children. These may include interactions that are beyond a child’s developmental capability, as well as overprotection and limitation of exploration and learning, or preventing the child participating in normal social interaction
- Seeing or hearing the ill-treatment of another

- Serious bullying (including cyberbullying), causing children frequently to feel frightened or in danger, or the exploitation or corruption of children

Sexual abuse involves forcing or enticing a child or young person to take part in sexual activities, not necessarily involving a high level of violence, whether or not the child is aware of what is happening. The activities may involve:

- Physical contact, including assault by penetration (for example rape or oral sex) or non-penetrative acts such as masturbation, kissing, rubbing and touching outside of clothing
- Non-contact activities, such as involving children in looking at, or in the production of, sexual images, watching sexual activities, encouraging children to behave in sexually inappropriate ways, or grooming a child in preparation for abuse (including via the internet)

Sexual abuse is not solely perpetrated by adult males. Women can also commit acts of sexual abuse, as can other children.

Neglect is the persistent failure to meet a child's basic physical and/or psychological needs, likely to result in the serious impairment of the child's health or development. Neglect may occur during pregnancy as a result of maternal substance abuse.

Once a child is born, neglect may involve a parent or carer failing to:

- Provide adequate food, clothing and shelter (including exclusion from home or abandonment)
- Protect a child from physical and emotional harm or danger
- Ensure adequate supervision (including the use of inadequate care-givers)
- Ensure access to appropriate medical care or treatment

It may also include neglect of, or unresponsiveness to, a child's basic emotional needs.

Appendix 2: safer recruitment and DBS checks – policy and procedures

We will record all information on the checks carried out in the school's single central record (SCR). Copies of these checks, where appropriate, will be held in individuals' personnel files. We follow requirements and best practice in retaining copies of these checks, as set out below.

New staff

When appointing new staff, we will:

- Verify their identity
- Obtain (via the applicant) an enhanced Disclosure and Barring Service (DBS) certificate, including barred list information for those who will be engaging in regulated activity (see definition below). We will not keep a copy of this for longer than 6 months
- Obtain a separate barred list check if they will start work in regulated activity before the DBS certificate is available

- Verify their mental and physical fitness to carry out their work responsibilities
- Verify their right to work in the UK. We will keep a copy of this verification for the duration of the member of staff's employment and for 2 years afterwards
- Verify their professional qualifications, as appropriate
- Ensure they are not subject to a prohibition order if they are employed to be a teacher
- Carry out further additional checks, as appropriate, on candidates who have lived or worked outside of the UK, including (where relevant) any teacher sanctions or restrictions imposed by a European Economic Area professional regulating authority, and criminal records checks or their equivalent
- Check that candidates taking up a management position are not subject to a prohibition from management (section 128) direction made by the secretary of state

We will ask for written information about previous employment history and check that information is not contradictory or incomplete.

We will seek references on all short-listed candidates, including internal candidates, before interview. We will scrutinise these and resolve any concerns before confirming appointments. The references requested will ask specific questions about the suitability of the applicant to work with children.

Regulated activity means a person who will be:

- Responsible, on a regular basis in a school or college, for teaching, training, instructing, caring for or supervising children; or
- Carrying out paid, or unsupervised unpaid, work regularly in a school or college where that work provides an opportunity for contact with children; or
- Engaging in intimate or personal care or overnight activity, even if this happens only once and regardless of whether they are supervised or not

Existing staff

If we have concerns about an existing member of staff's suitability to work with children, we will carry out all the relevant checks as if the individual was a new member of staff. We will also do this if an individual move from a post that is not regulated activity to one that is.

We will refer to the DBS anyone who has harmed, or poses a risk of harm, to a child or vulnerable adult where:

- We believe the individual has engaged in [relevant conduct](#); or
- The individual has received a caution or conviction for a relevant offence, or there is reason to believe the individual has committed a listed relevant offence, under the [Safeguarding Vulnerable Groups Act 2006 \(Prescribed Criteria and Miscellaneous Provisions\) Regulations 2009](#); or
- The 'harm test' is satisfied in respect of the individual (i.e. they may harm a child or vulnerable adult or put them at risk of harm); and
- The individual has been removed from working in regulated activity (paid or unpaid) or would have been removed if they had not left

Agency and third-party staff

We will obtain written notification from any agency or third-party organisation that it has carried out the necessary safer recruitment checks that we would otherwise perform. We will also check that the person presenting themselves for work is the same person on whom the checks have been made.

Contractors

We will ensure that any contractor, or any employee of the contractor, who is to work at the school has had the appropriate level of DBS check (this includes contractors who are provided through a PFI or similar contract). This will be:

- An enhanced DBS check with barred list information for contractors engaging in regulated activity
- An enhanced DBS check, not including barred list information, for all other contractors who are not in regulated activity but whose work provides them with an opportunity for regular contact with children

We will obtain the DBS check for self-employed contractors.

We will not keep copies of such checks for longer than 6 months.

Contractors who have not had any checks will not be allowed to work unsupervised or engage in regulated activity under any circumstances.

We will check the identity of all contractors and their staff on arrival at the school.

Trainee/student teachers

Where applicants for initial teacher training are salaried by us, we will ensure that all necessary checks are carried out.

Where trainee teachers are fee-funded, we will obtain written confirmation from the training provider that necessary checks have been carried out and that the trainee has been judged by the provider to be suitable to work with children.

Volunteers

We will:

- Never leave an unchecked volunteer unsupervised or allow them to work in regulated activity
- Obtain an enhanced DBS check with barred list information for all volunteers who are new to working in regulated activity
- Carry out a risk assessment when deciding whether to seek an enhanced DBS check without barred list information for any volunteers not engaging in regulated activity. We will retain a record of this risk assessment

Trustees

All trustees, local governors and members will have an enhanced DBS check without barred list information.

They will have an enhanced DBS check with barred list information if working in regulated activity.

The chair of the board will have their DBS check countersigned by the secretary of state.

All proprietors, trustees, local governors and members will also have the following checks:

- A section 128 check (to check prohibition on participation in management under [section 128 of the Education and Skills Act 2008](#)).
- Identity
- Right to work in the UK
- Other checks deemed necessary if they have lived or worked outside the UK

Staff working in alternative provision settings

Where we place a learner with an alternative provision provider, we obtain written confirmation from the provider that they have carried out the appropriate safeguarding checks on individuals working there that we would otherwise perform.

Adults who supervise learners on work experience

When organising work experience, we will ensure that policies and procedures are in place to protect children from harm.

We will also consider whether it is necessary for barred list checks to be carried out on the individuals who supervise a learner under 16 on work experience. This will depend on the specific circumstances of the work experience, including the nature of the supervision, the frequency of the activity being supervised, and whether the work is regulated activity.

Learners staying with host families

Where the school makes arrangements for learners to be provided with care and accommodation by a host family to which they are not related (for example, during a foreign exchange visit), we will request enhanced DBS checks with barred list information on those people.

Where the school is organising such hosting arrangements overseas and host families cannot be checked in the same way, we will work with our partner schools abroad to ensure that similar assurances are undertaken prior to the visit.

Appendix 3: allegations of abuse made against staff

This section of this policy applies to all cases in which it is alleged that a current member of staff or volunteer has:

- Behaved in a way that has harmed a child, or may have harmed a child, or
- Possibly committed a criminal offence against or related to a child, or
- Behaved towards a child or children in a way that indicates he or she would pose a risk of harm to children

It applies regardless of whether the alleged abuse took place in the school. Allegations against a teacher who is no longer teaching and historical allegations of abuse will be referred to the police.

We will deal with any allegation of abuse against a member of staff or volunteer very quickly, in a fair and consistent way that provides effective child protection while also supporting the individual who is the subject of the allegation.

Our procedures for dealing with allegations will be applied with common sense and judgement.

Suspension

Suspension will not be the default position, and will only be considered in cases where there is reason to suspect that a child or other children is/are at risk of harm, or the case is so serious that it might be grounds for dismissal. In such cases, we will only suspend an individual if we have considered all other options available and there is no reasonable alternative.

Based on an assessment of risk, we will consider alternatives such as:

- Redeployment within the school so that the individual does not have direct contact with the child or children concerned
- Providing an assistant to be present when the individual has contact with children
- Redeploying the individual to alternative work in the school so that they do not have unsupervised access to children
- Moving the child or children to classes where they will not come into contact with the individual, making it clear that this is not a punishment and parents have been consulted
- Temporarily redeploying the individual to another role in a different location, for example to an alternative school or other work for the academy trust.

Definitions for outcomes of allegation investigations

- **Substantiated:** there is sufficient evidence to prove the allegation
- **Malicious:** there is sufficient evidence to disprove the allegation and there has been a deliberate act to deceive
- **False:** there is sufficient evidence to disprove the allegation
- **Unsubstantiated:** there is insufficient evidence to either prove or disprove the allegation (this does not imply guilt or innocence)
- **Unfounded:** to reflect cases where there is no evidence or proper basis which supports the allegation being made

Procedure for dealing with allegations

In the event of an allegation that meets the criteria above, the Principal (or chair of the board where the Principal is the subject of the allegation) – the ‘case manager’ – will take the following steps:

- Immediately discuss the allegation with the designated officer at the local authority. This is to consider the nature, content and context of the allegation and agree a course of action, including whether further enquiries are necessary to enable a decision on how to proceed, and whether it is necessary to involve the police and/or children’s social care services. (The case manager may, on occasion, consider it necessary to involve the police *before* consulting the designated officer – for example, if the accused individual is deemed to be an immediate risk to children or there is evidence of a possible criminal offence. In such cases, the case manager will notify the designated officer as soon as practicably possible after contacting the police)

- Inform the accused individual of the concerns or allegations and likely course of action as soon as possible after speaking to the designated officer (and the police or children’s social care services, where necessary). Where the police and/or children’s social care services are involved, the case manager will only share such information with the individual as has been agreed with those agencies
- Where appropriate (in the circumstances described above), carefully consider whether suspension of the individual from contact with children at the school is justified or whether alternative arrangements such as those outlined above can be put in place. Advice will be sought from the designated officer, police and/or children’s social care services, as appropriate
- **If immediate suspension is considered necessary**, agree and record the rationale for this with the designated officer. The record will include information about the alternatives to suspension that have been considered, and why they were rejected. Written confirmation of the suspension will be provided to the individual facing the allegation or concern within 1 working day, and the individual will be given a named contact at the school and their contact details
- **If it is decided that no further action is to be taken** in regard to the subject of the allegation or concern, record this decision and the justification for it and agree with the designated officer what information should be put in writing to the individual and by whom, as well as what action should follow both in respect of the individual and those who made the initial allegation
- **If it is decided that further action is needed**, take steps as agreed with the designated officer to initiate the appropriate action in school and/or liaise with the police and/or children’s social care services as appropriate
- Provide effective support for the individual facing the allegation or concern, including appointing a named representative to keep them informed of the progress of the case and consider what other support is appropriate.
- Inform the parents or carers of the child/children involved about the allegation as soon as possible if they do not already know (following agreement with children’s social care services and/or the police, if applicable). The case manager will also inform the parents or carers of the requirement to maintain confidentiality about any allegations made against teachers (where this applies) while investigations are ongoing. Any parent or carer who wishes to have the confidentiality restrictions removed in respect of a teacher will be advised to seek legal advice
- Keep the parents or carers of the child/children involved informed of the progress of the case and the outcome, where there is not a criminal prosecution, including the outcome of any disciplinary process (in confidence)
- Make a referral to the DBS where it is thought that the individual facing the allegation or concern has engaged in conduct that harmed or is likely to harm a child, or if the individual otherwise poses a risk of harm to a child

If the school is made aware that the secretary of state has made an interim prohibition order in respect of an individual, we will immediately suspend that individual from teaching, pending the findings of the investigation by the [Teaching Regulation Agency](#).

Where the police are involved, wherever possible the academy trust will ask the police at the start of the investigation to obtain consent from the individuals involved to share their statements and evidence for use in the school's disciplinary process, should this be required at a later point.

Timescales

- Any cases where it is clear immediately that the allegation is unsubstantiated or malicious will be resolved within 1 week
- If the nature of an allegation does not require formal disciplinary action, we will institute appropriate action within 3 working days
- If a disciplinary hearing is required and can be held without further investigation, we will hold this within 15 working days

Specific actions

Action following a criminal investigation or prosecution

The case manager will discuss with the local authority's designated officer whether any further action, including disciplinary action, is appropriate and, if so, how to proceed, taking into account information provided by the police and/or children's social care services.

Conclusion of a case where the allegation is substantiated

If the allegation is substantiated and the individual is dismissed or the school ceases to use their services, or the individual resigns or otherwise ceases to provide their services, the case manager and the school's personnel adviser will discuss with the designated officer whether to make a referral to the DBS for consideration of whether inclusion on the barred lists is required.

If the individual concerned is a member of teaching staff, the case manager and personnel adviser will discuss with the designated officer whether to refer the matter to the Teaching Regulation Agency to consider prohibiting the individual from teaching.

Individuals returning to work after suspension

If it is decided on the conclusion of a case that an individual who has been suspended can return to work, the case manager will consider how best to facilitate this.

The case manager will also consider how best to manage the individual's contact with the child or children who made the allegation, if they are still attending the school.

Unsubstantiated or malicious allegations

If an allegation is shown to be deliberately invented, or malicious, the Principal, or other appropriate person in the case of an allegation against the Principal, will consider whether any disciplinary action is appropriate against the learner(s) who made it, or whether the police should be asked to consider whether action against those who made the allegation might be appropriate, even if they are not a learner.

Confidentiality

The school will make every effort to maintain confidentiality and guard against unwanted publicity while an allegation is being investigated or considered.

The case manager will take advice from the local authority's designated officer, police and children's social care services, as appropriate, to agree:

- Who needs to know about the allegation and what information can be shared
- How to manage speculation, leaks and gossip, including how to make parents or carers of a child/children involved aware of their obligations with respect to confidentiality
- What, if any, information can be reasonably given to the wider community to reduce speculation
- How to manage press interest if, and when, it arises

Record-keeping

The case manager will maintain clear records about any case where the allegation or concern meets the criteria above and store them on the individual's confidential personnel file for the duration of the case. Such records will include:

- A clear and comprehensive summary of the allegation
- Details of how the allegation was followed up and resolved
- Notes of any action taken and decisions reached (and justification for these, as stated above)

If an allegation or concern is not found to have been malicious, the school will retain the records of the case on the individual's confidential personnel file, and provide a copy to the individual.

Where records contain information about allegations of sexual abuse, we will preserve these for the [Independent Inquiry into Child Sexual Abuse](#) (IICSA), for the term of the inquiry. We will retain all other records at least until the individual has reached normal pension age, or for 10 years from the date of the allegation if that is longer.

The records of any allegation that is found to be malicious will be deleted from the individual's personnel file.

References

When providing employer references, we will not refer to any allegation that has been proven to be false, unsubstantiated or malicious, or any history of allegations where all such allegations have been proven to be false, unsubstantiated or malicious.

Learning lessons

After any cases where the allegations are substantiated, we will review the circumstances of the case with the local authority's designated officer to determine whether there are any improvements that we can make to the school's procedures or practice to help prevent similar events in the future.

This will include consideration of (as applicable):

- Issues arising from the decision to suspend the member of staff
- The duration of the suspension
- Whether or not the suspension was justified

- The use of suspension when the individual is subsequently reinstated. We will consider how future investigations of a similar nature could be carried out without suspending the individual

Children missing from education

A child going missing from education, particularly repeatedly, can be a warning sign of a range of safeguarding issues. This might include abuse or neglect, such as sexual abuse or exploitation or child criminal exploitation, or issues such as mental health problems, substance abuse, radicalisation, FGM or forced marriage.

There are many circumstances where a child may become missing from education, but some children are particularly at risk. These include children who:

- Are at risk of harm or neglect
- Are at risk of forced marriage or FGM
- Come from Gypsy, Roma, or Traveller families
- Come from the families of service personnel
- Go missing or run away from home or care
- Are supervised by the youth justice system
- Cease to attend a school
- Come from new migrant families

We will follow our procedures for unauthorised absence and for dealing with children who go missing from education, particularly on repeat occasions, to help identify the risk of abuse and neglect, including sexual exploitation, and to help prevent the risks of going missing in future. This includes informing the local authority if a child leaves the school without a new school being named, and adhering to requirements with respect to sharing information with the local authority, when applicable, when removing a child's name from the admission register at non-standard transition points.

Staff will be trained in signs to look out for and the individual triggers to be aware of when considering the risks of potential safeguarding concerns which may be related to being missing, such as travelling to conflict zones, FGM and forced marriage.

If a staff member suspects that a child is suffering from harm or neglect, we will follow local child protection procedures, including with respect to making reasonable enquiries. We will make an immediate referral to the local authority children's social care team, and the police, if the child is suffering or likely to suffer from harm, or in immediate danger.

Child sexual exploitation

Child sexual exploitation (CSE) is a form of child sexual abuse that occurs where an individual or group takes advantage of an imbalance of power to coerce, manipulate or deceive a child into sexual activity in exchange for something the victim needs or wants, and/or for the financial advantage or increased status of the perpetrator or facilitator.

This can involve violent, humiliating and degrading sexual assaults, but does not always involve physical contact and can happen online. For example, young people may be persuaded or forced to share sexually explicit images of themselves, have sexual conversations by text, or take part in sexual activities using a webcam.

Children or young people who are being sexually exploited may not understand that they are being abused. They often trust their abuser and may be tricked into believing they are in a loving, consensual relationship.

If a member of staff suspects CSE, they will discuss this with the DSL. The DSL will trigger the local safeguarding procedures, including a referral to the local authority's children's social care team and the police, if appropriate.

If a child is thought to be at risk or discloses they are suffering Sexual Exploitation, the DSL will follow the [Section 47](#) referral as described above. The DSL will also complete a Child Sexual Exploitation Screening Tool and a Police referral, sending them all to the MASH.

Indicators of sexual exploitation can include a child:

- Appearing with unexplained gifts or new possessions
- Associating with other young people involved in exploitation
- Having older boyfriends or girlfriends
- Suffering from sexually transmitted infections or becoming pregnant
- Displaying inappropriate sexualised behaviour
- Suffering from changes in emotional wellbeing
- Misusing drugs and/or alcohol
- Going missing for periods of time, or regularly coming home late
- Regularly missing school or education, or not taking part in education

Homelessness

Being homeless or being at risk of becoming homeless presents a real risk to a child's welfare.

The DSL and Deputy will be aware of contact details and referral routes in to the local housing authority so they can raise/progress concerns at the earliest opportunity (where appropriate and in accordance with local procedures).

Where a child has been harmed or is at risk of harm, the DSL will also make a referral to children's social care.

So-called 'honour-based' violence (including FGM and forced marriage)

So-called 'honour-based' violence (HBV) encompasses incidents or crimes committed to protect or defend the honour of the family and/or community, including FGM, forced marriage, and practices such as breast ironing.

Abuse committed in this context often involves a wider network of family or community pressure and can include multiple perpetrators.

All forms of HBV are abuse and will be handled and escalated as such. All staff will be alert to the possibility of a child being at risk of HBV or already having suffered it. If staff have a concern, they will speak to the DSL, who will activate local safeguarding procedures.

If there are concerns or a child makes a disclosure of Forced Marriage or Honour Based Abuse, staff will inform the DSL. The DSL will follow [Section 47](#) referral through a MARF and if needed contact the Forced Marriage Unit for further advice.

FGM

The DSL will make sure that staff have access to appropriate training to equip them to be alert to children affected by FGM or at risk of FGM.

Section 7.3 of this policy sets out the procedures to be followed if a staff member discovers that an act of FGM appears to have been carried out or suspects that a learner is at risk of FGM.

Indicators that FGM has already occurred include:

- A learner confiding in a professional that FGM has taken place
- A mother/family member disclosing that FGM has been carried out
- A family/learner already being known to social services in relation to other safeguarding issues
- A girl:
 - Having difficulty walking, sitting or standing, or looking uncomfortable
 - Finding it hard to sit still for long periods of time (where this was not a problem previously)
 - Spending longer than normal in the bathroom or toilet due to difficulties urinating
 - Having frequent urinary, menstrual or stomach problems
 - Avoiding physical exercise or missing PE
 - Being repeatedly absent from school, or absent for a prolonged period
 - Demonstrating increased emotional and psychological needs – for example, withdrawal or depression, or significant change in behaviour
 - Being reluctant to undergo any medical examinations
 - Asking for help, but not being explicit about the problem
 - Talking about pain or discomfort between her legs

Potential signs that a learner may be at risk of FGM include:

- The girl's family having a history of practising FGM (this is the biggest risk factor to consider)
- FGM being known to be practised in the girl's community or country of origin
- A parent or family member expressing concern that FGM may be carried out
- A family not engaging with professionals (health, education or other) or already being known to social care in relation to other safeguarding issues

A girl:

- Having a mother, older sibling or cousin who has undergone FGM
- Having limited level of integration within UK society
- Confiding to a professional that she is to have a "special procedure" or to attend a special occasion to "become a woman"

- Talking about a long holiday to her country of origin or another country where the practice is prevalent, or parents stating that they or a relative will take the girl out of the country for a prolonged period
- Requesting help from a teacher or another adult because she is aware or suspects that she is at immediate risk of FGM
- Talking about FGM in conversation – for example, a girl may tell other children about it (although it is important to take into account the context of the discussion)
- Being unexpectedly absent from school
- Having sections missing from her ‘red book’ (child health record) and/or attending a travel clinic or equivalent for vaccinations/anti-malarial medication

The above indicators and risk factors are not intended to be exhaustive.

Forced marriage

Forcing a person into marriage is a crime. A forced marriage is one entered into without the full and free consent of one or both parties and where violence, threats, or any other form of coercion is used to cause a person to enter into a marriage. Threats can be physical or emotional and psychological.

Staff will receive training around forced marriage and the presenting symptoms. We are aware of the ‘one chance’ rule, i.e. we may only have one chance to speak to the potential victim and only one chance to save them.

If a member of staff suspects that a learner is being forced into marriage, they will speak to the learner about their concerns in a secure and private place. They will then report this to the DSL.

The DSL will:

- Speak to the learner about the concerns in a secure and private place
- Activate the local safeguarding procedures and refer the case to the local authority’s designated officer
- Seek advice from the [Forced Marriage Unit](#) on 020 7008 0151 or fm@fco.gov.uk
- Refer the learner to an education welfare officer, pastoral tutor, learning mentor, or school counsellor, as appropriate

Preventing radicalisation

Radicalisation refers to the process by which a person comes to support terrorism and forms of extremism. Extremism is vocal or active opposition to fundamental British values, such as democracy, the rule of law, individual liberty, and mutual respect and tolerance of different faiths and beliefs.

Schools have a duty to prevent children from being drawn into terrorism. The DSL will undertake Prevent awareness training and make sure that staff have access to appropriate training to equip them to identify children at risk.

We will assess the risk of children in our school being drawn into terrorism. This assessment will be based on an understanding of the potential risk in our local area, in collaboration with our local safeguarding partners and local police force.

We will ensure that suitable internet filtering is in place, and equip our learners to stay safe online at school and at home.

There is no single way of identifying an individual who is likely to be susceptible to an extremist ideology. Radicalisation can occur quickly or over a long period.

Staff will be alert to changes in learners' behaviour.

The government website [Educate Against Hate](#) and charity [NSPCC](#) say that signs that a learner is being radicalised can include:

- Refusal to engage with, or becoming abusive to, peers who are different from themselves
- Becoming susceptible to conspiracy theories and feelings of persecution
- Changes in friendship groups and appearance
- Rejecting activities they used to enjoy
- Converting to a new religion
- Isolating themselves from family and friends
- Talking as if from a scripted speech
- An unwillingness or inability to discuss their views
- A sudden disrespectful attitude towards others
- Increased levels of anger
- Increased secretiveness, especially around internet use
- Expressions of sympathy for extremist ideologies and groups, or justification of their actions
- Accessing extremist material online, including on Facebook or Twitter
- Possessing extremist literature
- Being in contact with extremist recruiters and joining, or seeking to join, extremist organisations

Children who are at risk of radicalisation may have low self-esteem, or be victims of bullying or discrimination. It is important to note that these signs can also be part of normal teenage behaviour – staff should have confidence in their instincts and seek advice if something feels wrong.

If staff are concerned about a learner, they will follow our procedures set out in section 7.5 of this policy, including discussing their concerns with the DSL.

If there are concerns about a child being radicalised under the Prevent Duty (2015) or they disclose extremist ideology and views, then the DSL will referral completing a MARF and a Prevent Referral for Channel. Awareness of the Far Right movement within the local area will be closely monitored. Parents/Carers will only be notified if instructed by MASH or Prevent staff.

Staff must always take action if they are worried.

Self-Harm and Mental Health

Although this area is of paramount importance, it is not supported by Children's Services as significant harm. Children thought to be suffering poor mental health or disclose self-harm will be referred to the parent/carer to take to the family GP. The GP will assess the medical needs and refer as required.

CAMHS referrals can only be made via GP or hospital referral. The DSL will advise parents/carers on procedures to follow if they are concerned at home, this may include attending the local A&E or even phoning 999 in cases of emergency. If a parent fails to seek medical help for their child, consideration will be given to possible Neglect and a [Section 47 referral](#)

Harmful Sexual Behaviour

If staff are concerned about the sexualised behaviour of a child, they will report it to the DSL using the internal reporting system. The DSL will use the Brook Traffic Light System to identify levels of risk. Green will indicate normal age appropriate sexualised behaviour, Amber will identify a concern requiring further internal action and red will indicate a [Section 47 referral](#) is made. If a MARF is to be completed, it will be sent with the completed risk assessment. Parents/carers will be notified unless it would place the child at greater risk or if instructed not to do so by the MASH Team.

Criminal Exploitation and County Lines

Gangs groom, threaten or trick children into trafficking their drugs for them. They might threaten a young person physically, or they might threaten the young person's family members. The gangs might also offer something in return for the young person's cooperation – it could be money, food, alcohol, clothes and jewellery, or improved status – but the giving of these gifts will usually be manipulated so that the child feels they are in debt to their exploiter. However, they become trapped in county lines, the young people involved feel as if they have no choice but to continue doing what the gangs want.

If there are concerns or a child discloses Criminal Exploitation, then the matter will be referred to the MASH to establish Threshold levels. It will usually require a referral to the Early Help Team at Youth Offending Services, however, this will rely on parental consent being obtained. If consent is refused, then a MARF will be completed and sent to Children's Services.

Private Fostering

Private fostering is an arrangement made privately (i.e. not involving the local authority). A private foster carer is someone other than a parent or close relative that takes on the day-to-day care of a child. The parent retains overall responsibility for the welfare of the child. It is an arrangement that lasts for a period of 28 days or more in agreement with the child's parent. Private fostering applies to a child under the age of 16, or under 18, if disabled.

Any child living with an adult that is **NOT** a parent, grandparent, brother, sister, uncle or aunt for a period of more than 28 days will be classed as being Privately Fostered and reported to the Local Authority. This is in line with [Section 44 of the Children Act 2004](#).

Young Carer

Any child that is caring for another family member who has a long term illness. The care provided can be physical or emotional support. It includes;

- Physical disability
- Mental Disability
- A long term life limiting illness
- Problems with mental Health
- Alcohol or drug abuse related problems
- Age related frailty

The DSL will make a referral to '[Spurgeons](#)' for a full assessment of need, this may involve information sharing with other agencies.

Teenage Pregnancy

The DSL will make a direct referral to The Teenage Pregnancy Education Support Officer to provide support for all teenage parents aged 16 or under. Referrals will be made as soon as possible to ensure support for the young person even if the chosen path is termination.

Pregnant girls remain in school for as long as possible before the birth and are supported back into school appropriately. Assistance is also given to ensure childcare is in place under the Care to Learn Scheme. Young fathers are also supported educationally and wider support is provided by the designated Young Father's Support Worker on the Teenage Pregnancy/Respect Yourself team.

In addition to the above, the following are also Safeguarding concerns that will be reported to the DSL

- Bullying (see bullying policy) including online and prejudice-based bullying.
- Racist, disability, homophobic or transphobic abuse
- Gender Based violence or violence against women and girls
- Use of modern technology relating to safety
- Gangs and Youth Violence
- Teenage Relationship Abuse
- Sexual Health and Safety
- Any other issue that poses a risk to the safety of a child

Checking the identity and suitability of visitors

All visitors will be required to verify their identity to the satisfaction of staff at reception.

If the visitor is unknown to the setting, we will check their credentials and reason for visiting before allowing them to enter the setting. Visitors should be ready to produce identification.

Visitors are expected to sign in and wear a visitor's badge.

Visitors to the school who are visiting for a professional purpose, such as educational psychologists and school improvement officers, will be asked to show photo ID and:

- Will be asked to show their DBS certificate, which will be checked alongside their photo ID; or
- The organisation sending the professional, such as the LA or educational psychology service, will provide prior written confirmation that an enhanced DBS check with barred list information has been carried out

All other visitors, including visiting speakers, will be accompanied by a member of staff at all times. We will not invite into the school any speaker who is known to disseminate extremist views, and will carry out appropriate checks to ensure that any individual or organisation using school facilities is not seeking to disseminate extremist views or radicalise learners or staff.

Visitors working directly with children will have different coloured lanyards to visitors having no unsupervised contact with children. This makes it easier for staff and children to challenge visitors.

Missing learners

Our procedures are designed to ensure that a missing child is found and returned to effective supervision as soon as possible.

A child going missing from education is a potential indicator of abuse or neglect, and such children are at risk of being victims of harm, exploitation or radicalisation. There are many circumstances where a child may become missing from education, but some children are particularly at risk. These include children who:

- Are at risk of harm or neglect;
- Come from Gypsy, Roma, or Traveller families;
- Come from the families of service personnel;
- Go missing or run away from home or care;
- Are supervised by the youth justice system; come from new migrant families

We will follow our procedures for unauthorised absence and for dealing with children who go missing from education, particularly on repeat occasions, to help identify the risk of abuse and neglect, including sexual exploitation, and to help prevent the risks of going missing in future. This includes informing the local authority if a child leaves the school without a new school being named and adhering to requirements with respect to sharing information with the local authority, when applicable, when removing a child's name from the admission register at non-standard transition points.

Staff will be trained in signs to look out for and the individual triggers to be aware of when considering the risks of potential safeguarding concerns which may be related to being missing, such as travelling to conflict zones, FGM and forced marriage.

If a staff member suspects that a child is suffering from harm or neglect, we will follow local child protection procedures, including with respect to making reasonable enquiries. We will make an immediate referral to the local authority children's social care team, and the police, if the child is in immediate danger or at risk of harm.

Appendix 4: Role of the designated safeguarding lead

The designated safeguarding lead should take lead responsibility for safeguarding and child protection (including online safety). This should be explicit in the role holder's job description. The DSL must be a member of the senior leadership team.

This person should have the appropriate status and authority within the school to carry out the duties of the post. They should be given the time, funding, training, resources and support to provide advice and support to other staff on child welfare and child protection matters, to take part in strategy discussions and inter-agency meetings, and/or to support other staff to do so, and to contribute to the assessment of children.

Deputy designated safeguarding leads

The deputy designated safeguarding leads should be trained to the same standard as the designated safeguarding lead and the role should be explicit in their job description. Whilst the activities of the designated safeguarding lead can be delegated to appropriately trained deputies, the ultimate lead responsibility for child protection, as set out above, remains with the designated safeguarding lead, this lead responsibility should not be delegated.